



IMC eSIM



iOS System Configuration



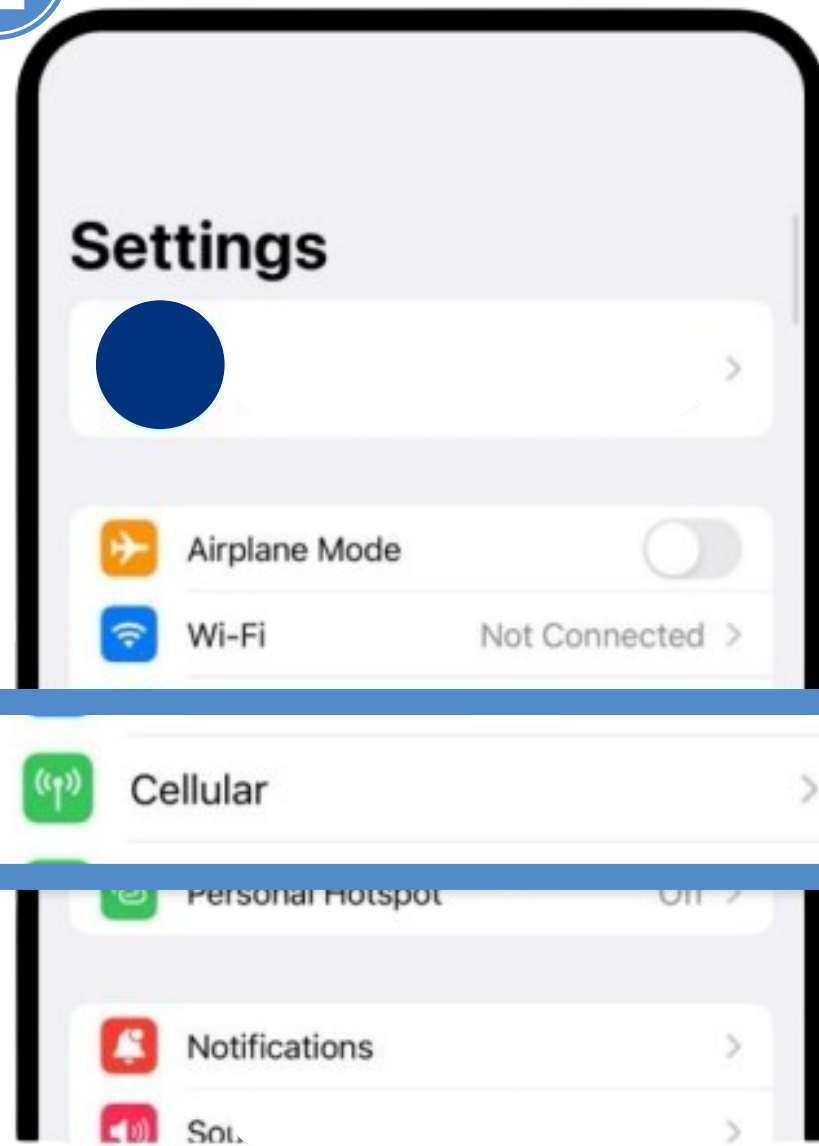
IMC eSIM

**iOS System Configuration
(Scan to enable)**

IMC eSIM iOS System Configuration (Scan to enable)

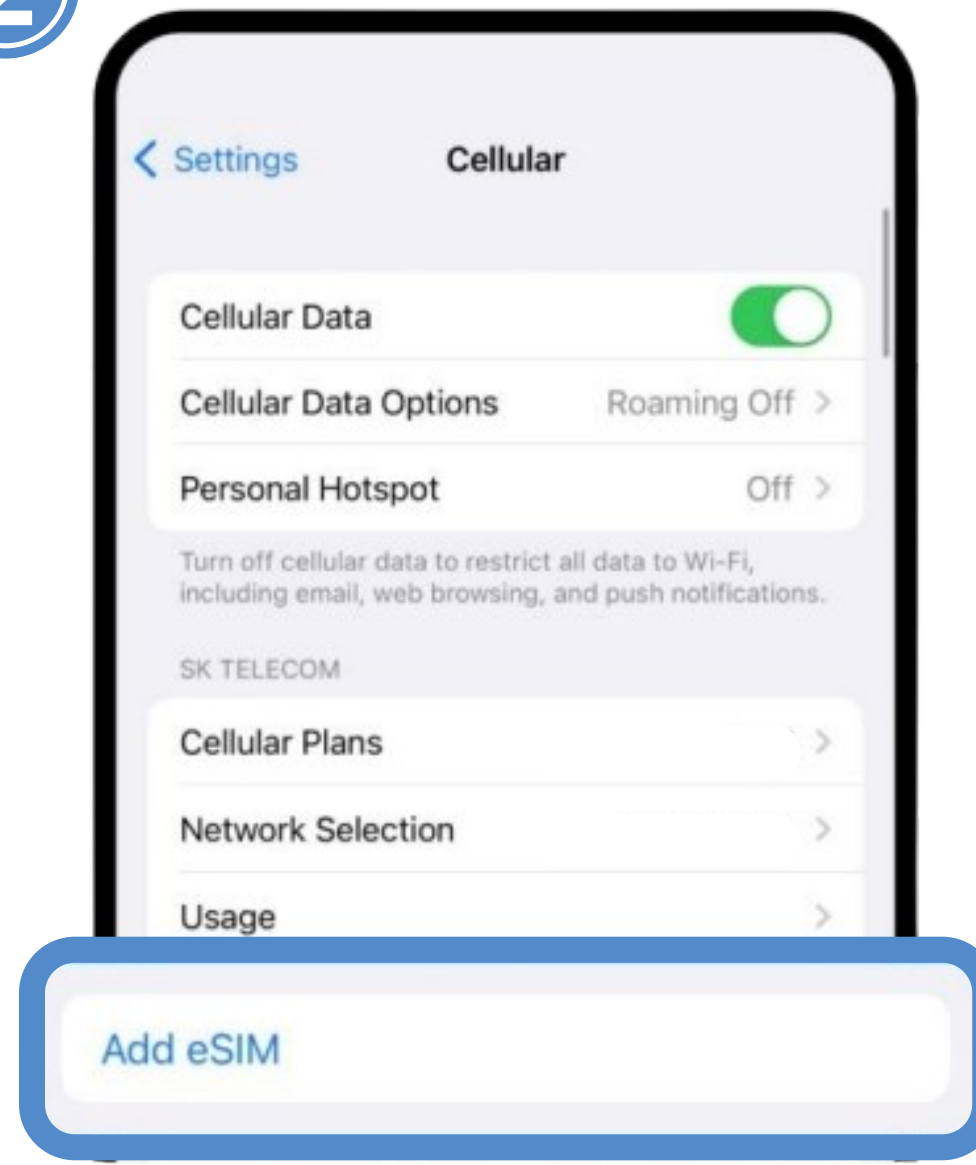


1



Enter settings and Tap on 'Cellular'

2



Tap on the 'Add eSIM' option.

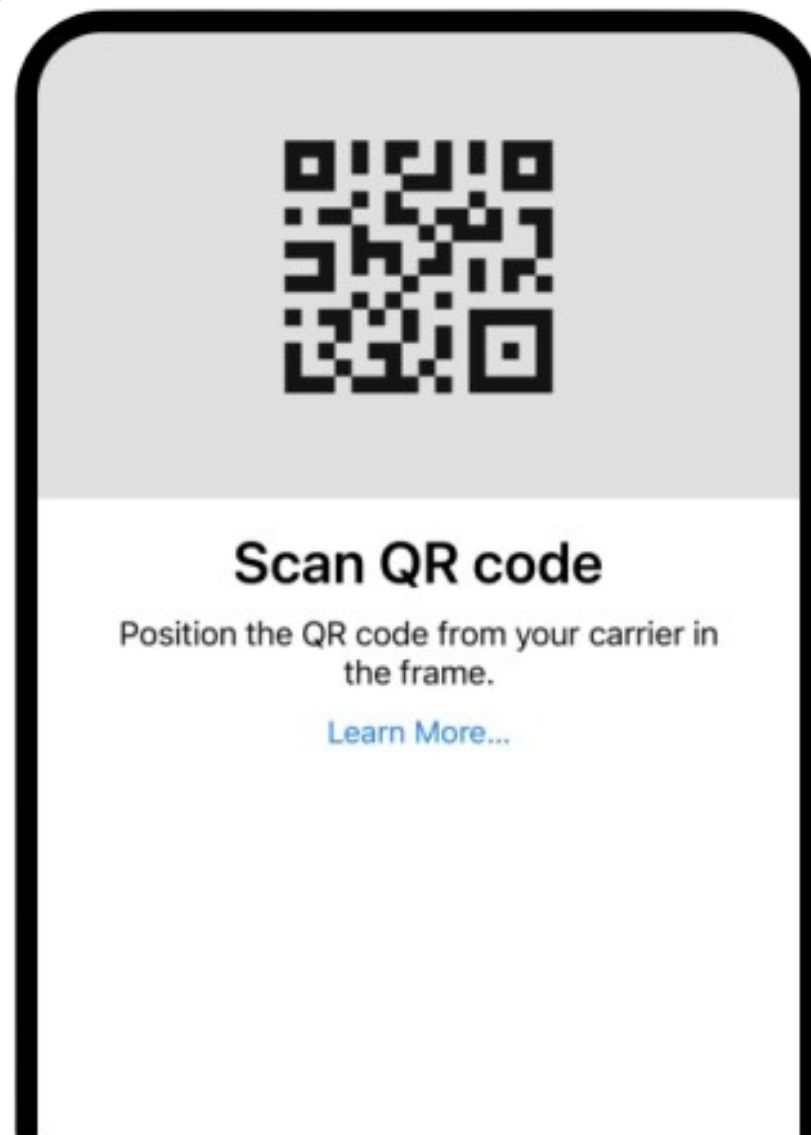
3



Tap on ' Use QR CODE'

iOS System Configuration (Scan to enable)

4



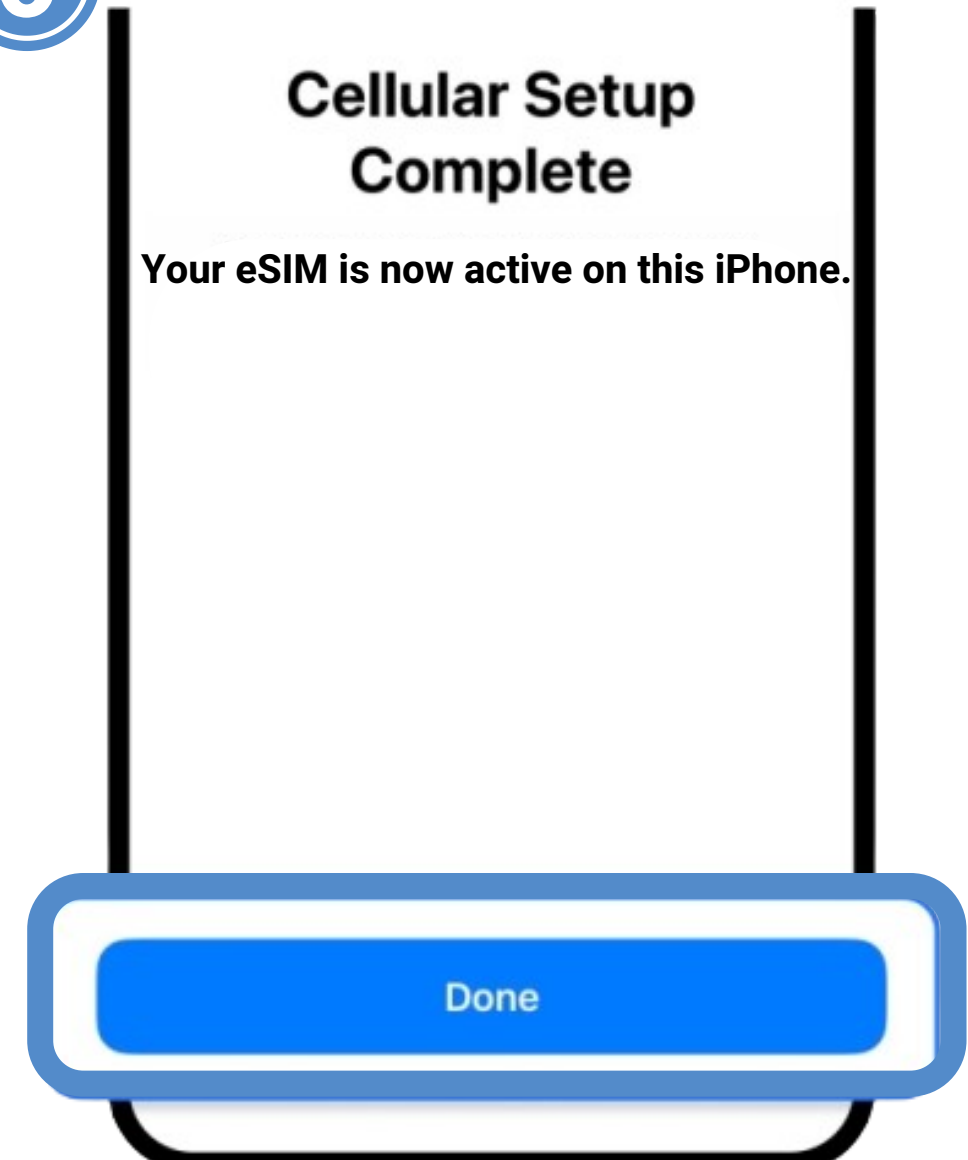
Scan QR Code

5



Tap 'Continue'

6

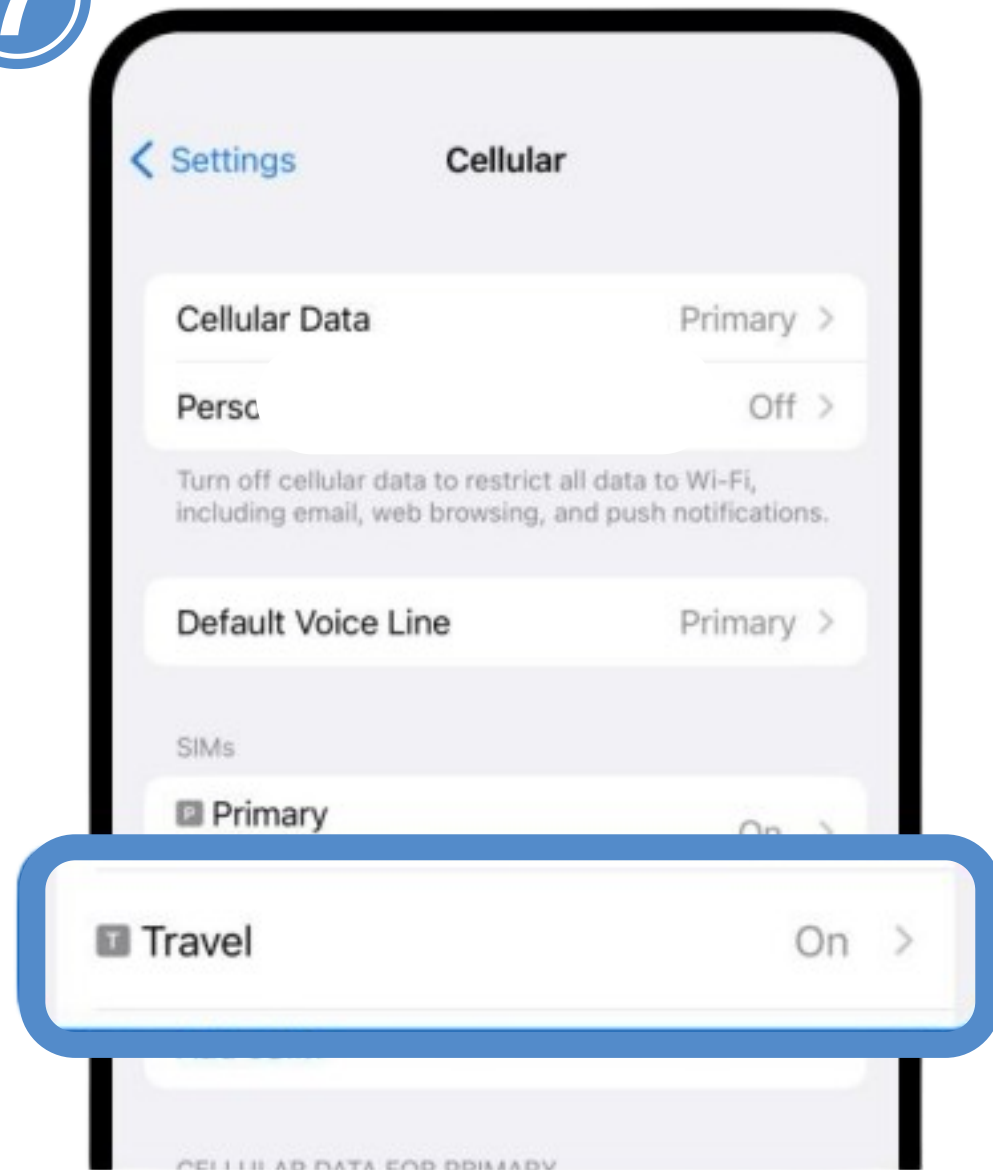


Tap 'Done'

IMC eSIM iOS System Configuration (Scan to enable)

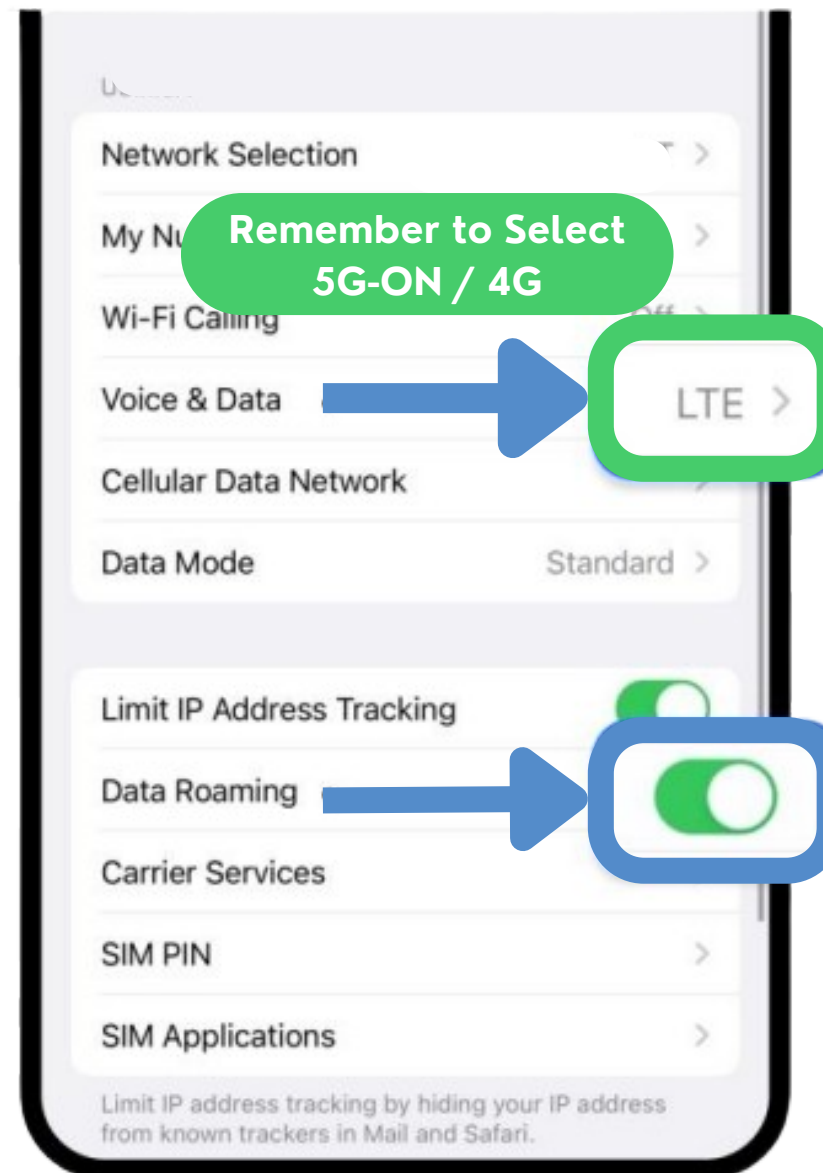


7



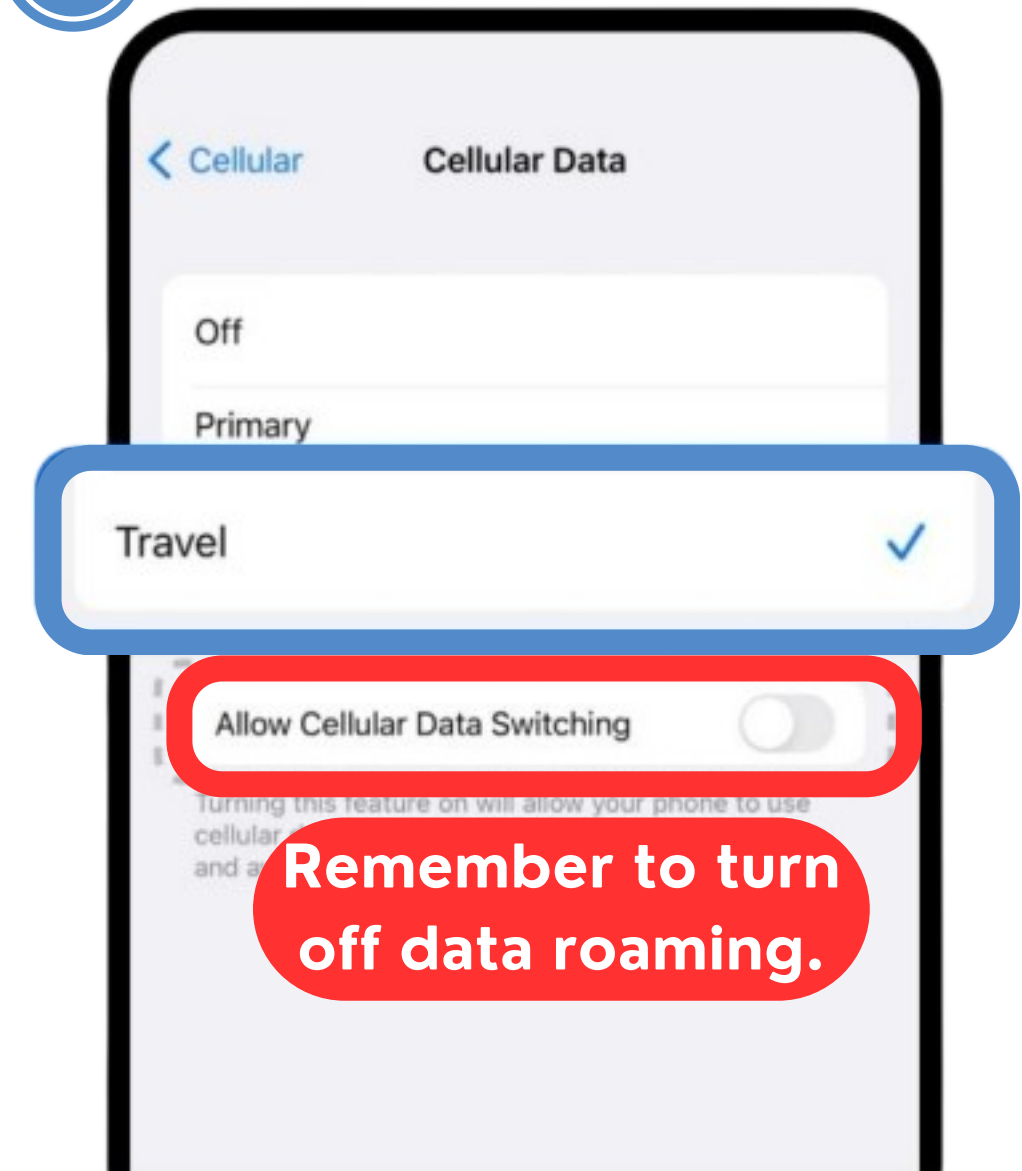
Tap on the added eSIM

8



Set to LTE and turn on data roaming.

9

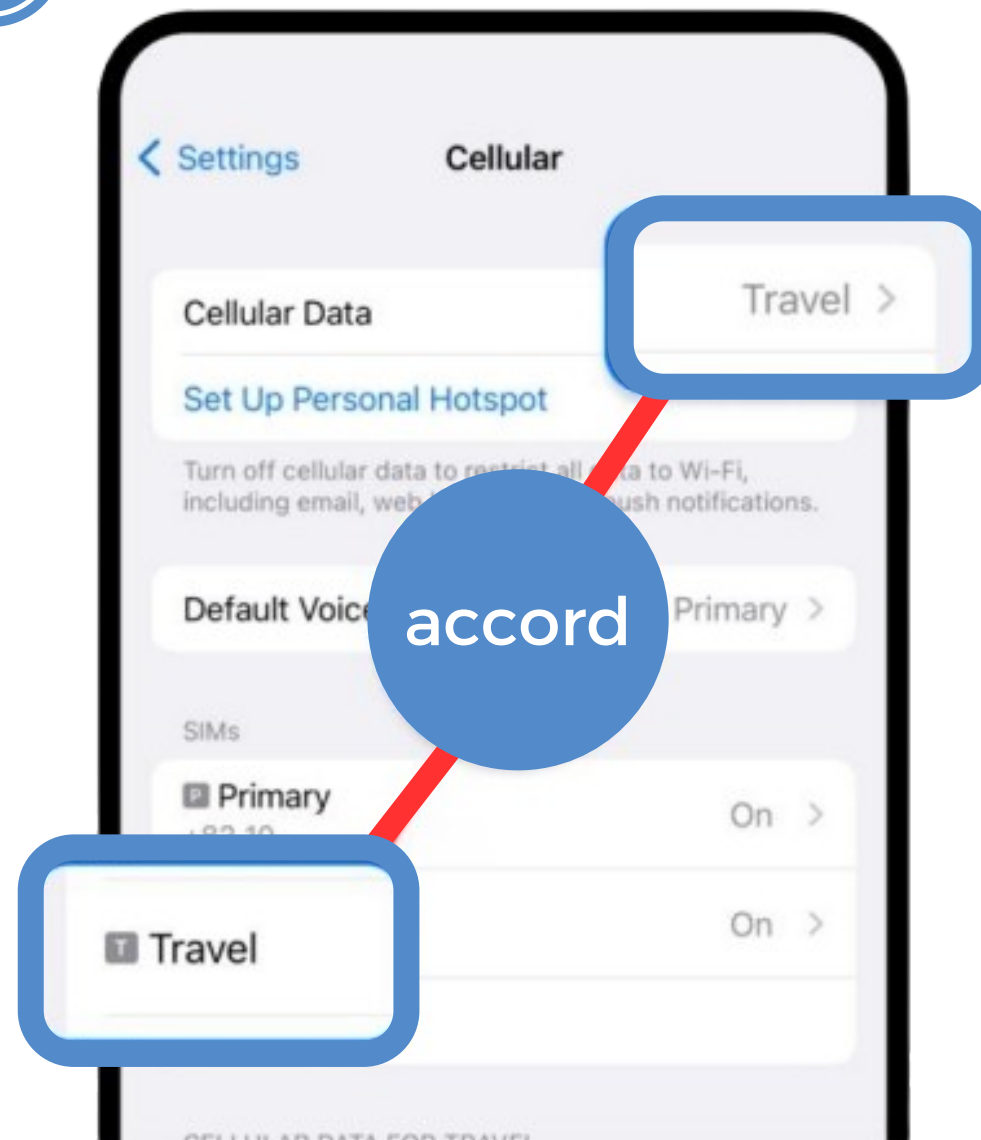


Set to LTE and turn on data roaming.

IMC eSIM iOS System Configuration (Scan to enable)



10



Ensure that eSIM is selected.

11

Agree to the terms and conditions, confirm the APN matches with those on the "APN & NETWORK OPERATOR LIST".

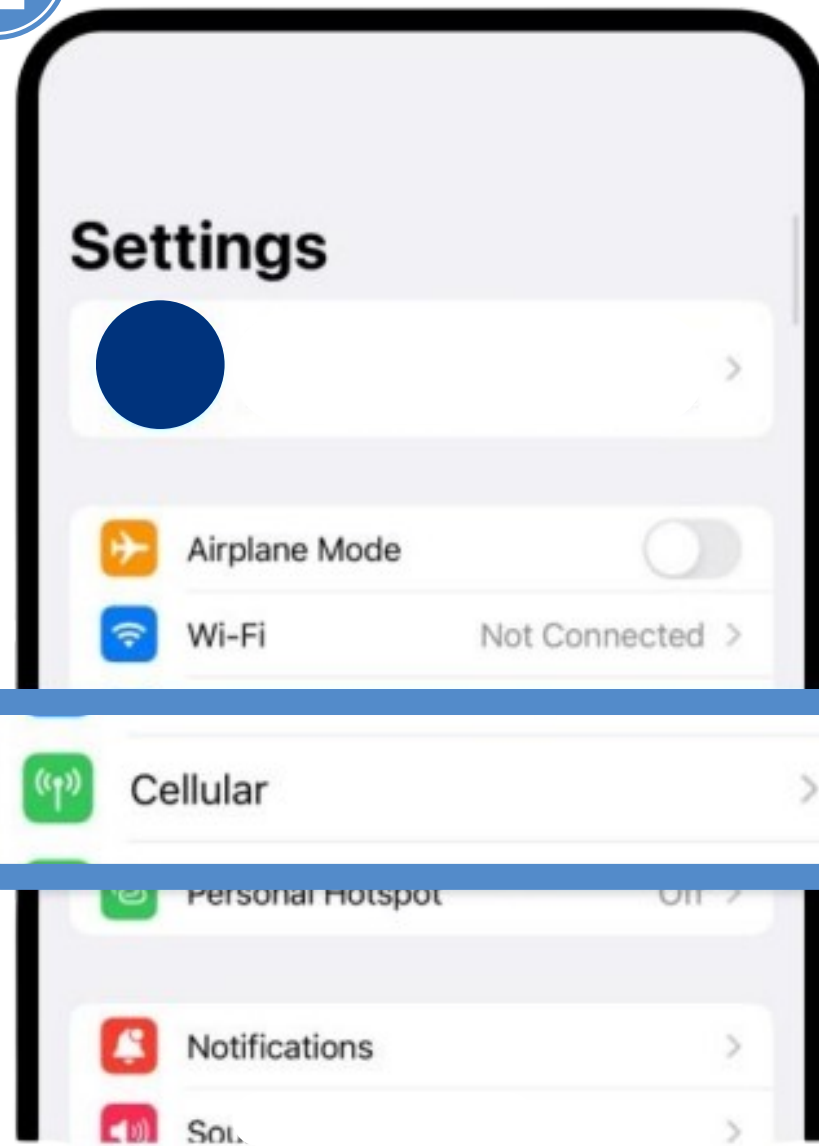
Once eSIM setup is completed, and now you can enjoy data services

IMC eSIM

**iOS System Configuration
(Manually activate)**

iOS System Configuration (Manually activate)

1



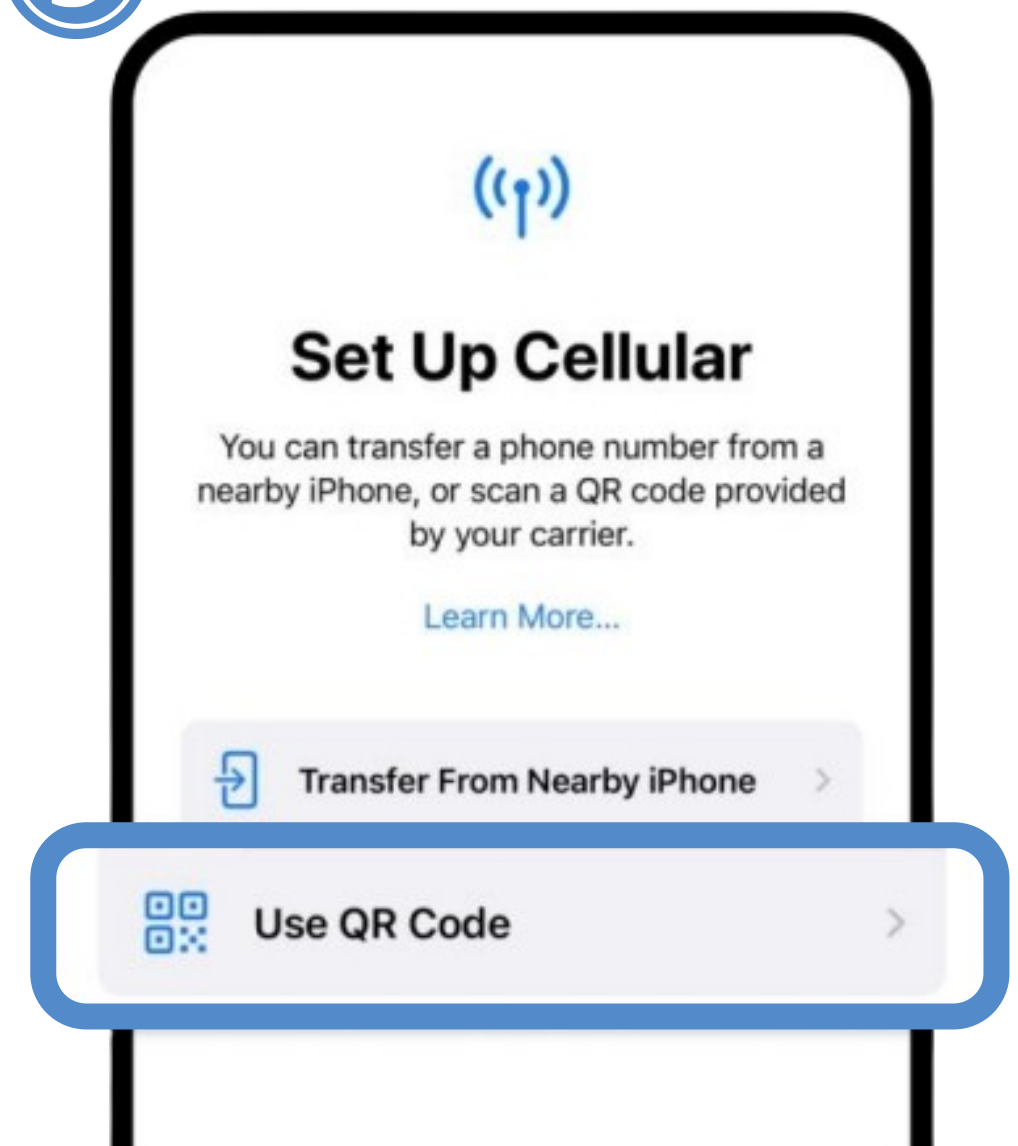
Enter settings and Tap on 'Cellular'

2



Tap on the 'Add eSIM' option.

3

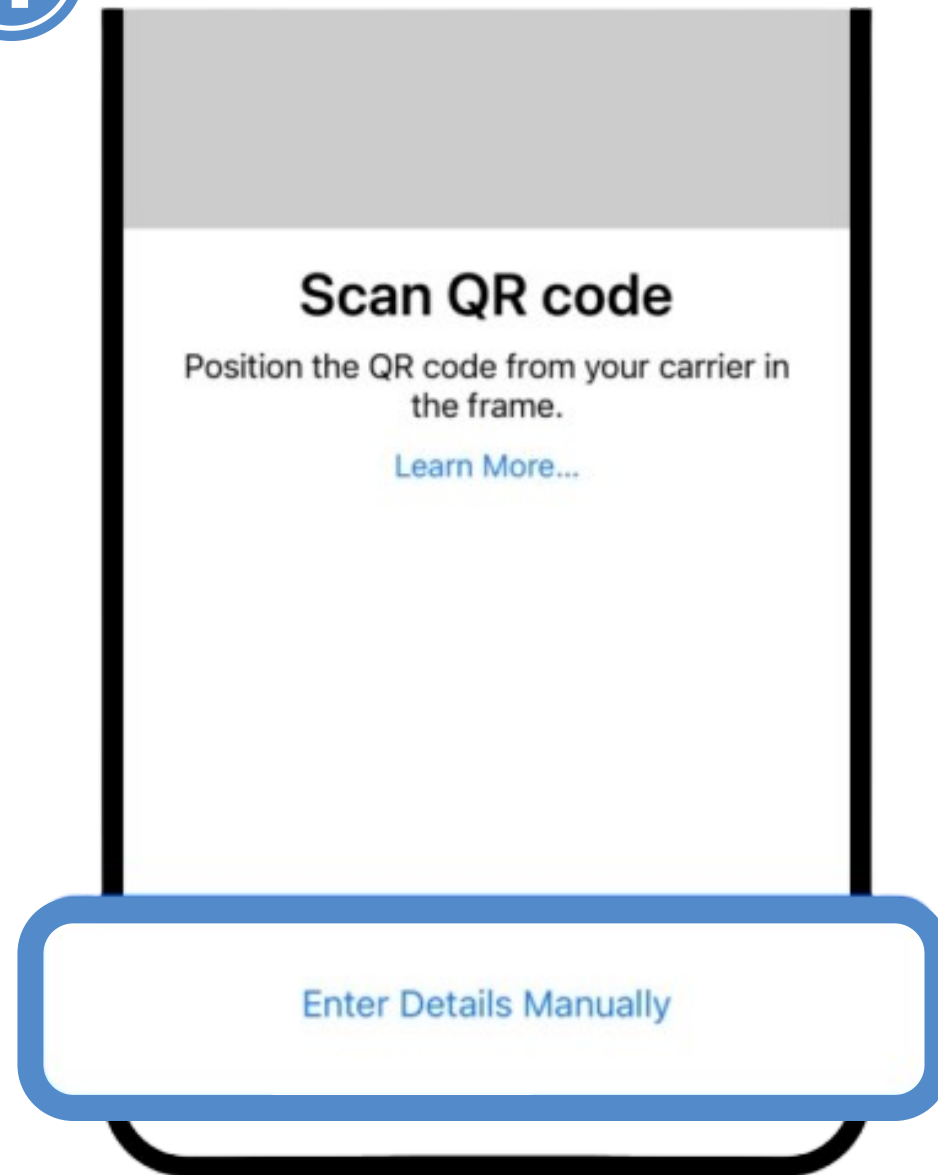


Tap on ' Use QR CODE'

IMC eSIM iOS System Configuration (Manually activate)

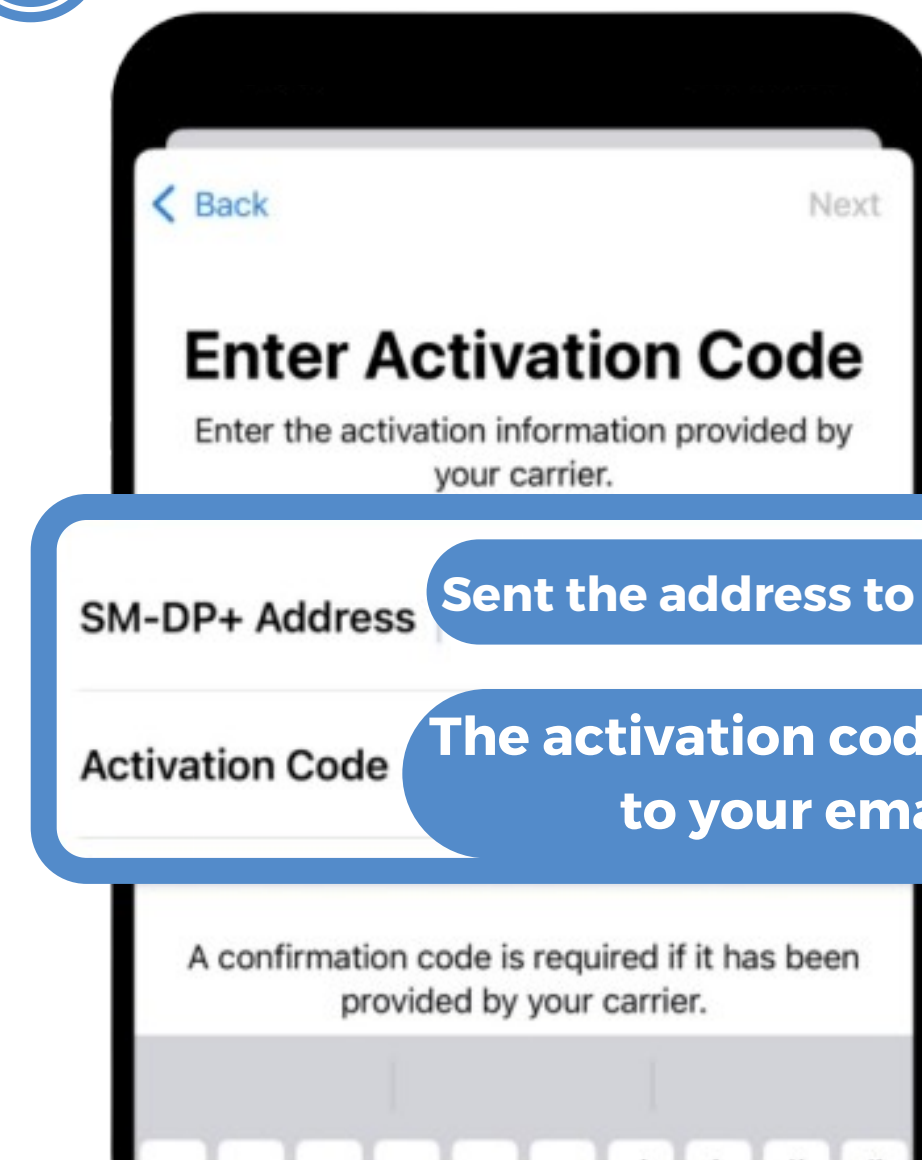


4



Tap on 'Enter Details Manually'

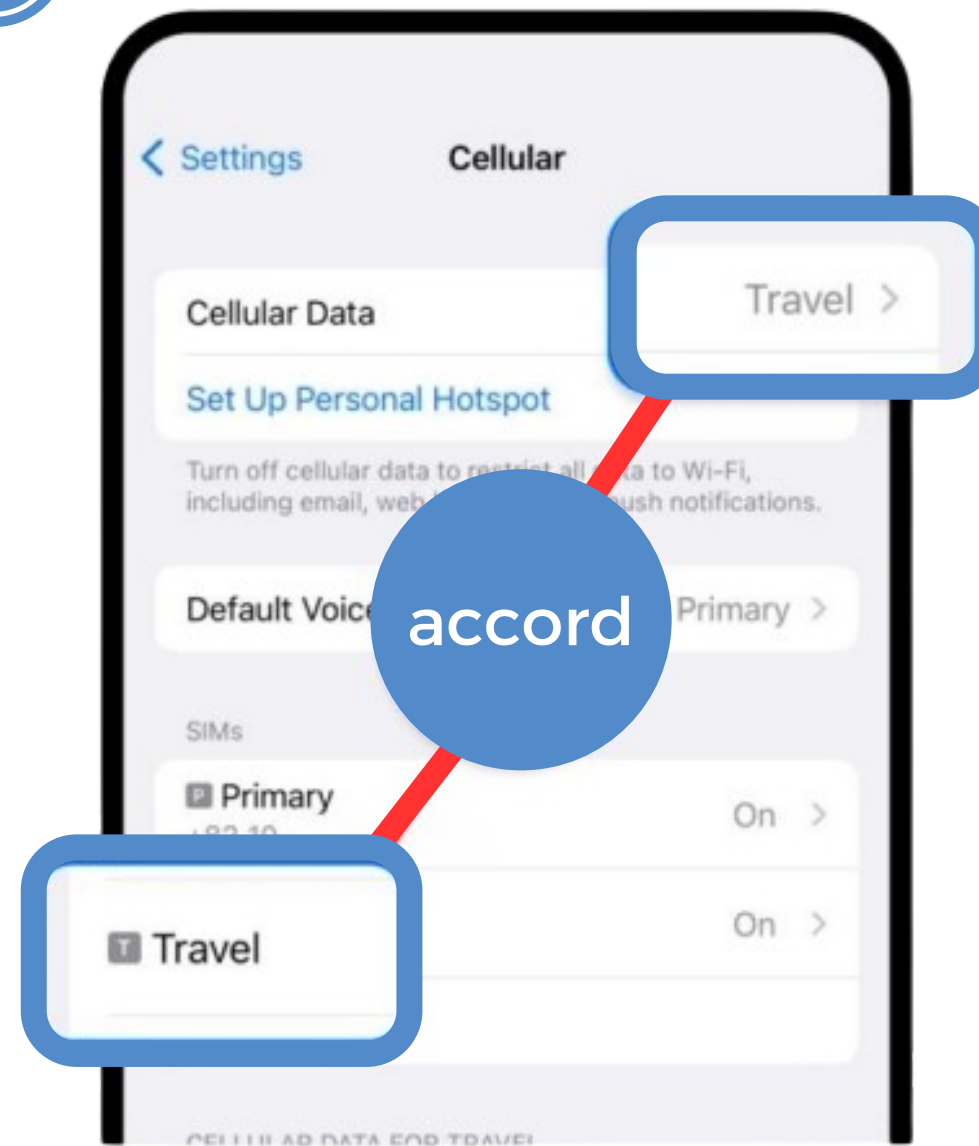
5



Enter detailed information.

iOS System Configuration (Manually activate)

10



Ensure that eSIM is selected.

11

Agree to the terms and conditions, confirm the APN matches with those on the "APN & NETWORK OPERATOR LIST".

Once eSIM setup is completed, and now you can enjoy data services



APN AND NETWORK

OPERATOR LIST

(ICCID PREFIX 8985207)

Country / Region	Service Provider	Network	APN
Korea	SK Telecom	5G / 4G / LTE	3gnet
Japan	Softbank	5G / 4G / LTE	
Taiwan	Chunghwa	4G/ LTE	
China	China Unicom	4G/ LTE	
Macau	CTM	4G/ LTE	
Singapore	SingTel/ Star Hub	4G/ LTE	
Malaysia	DIGI/ Maxis	4G/ LTE	
Thailand	AIS/ DTAC	4G/ LTE	
Australia	Optus	4G/ LTE	
New Zealand	2degree	4G/ LTE	
Cambodia	Metfone	4G/ LTE	
Indonesia	Indosat	4G/ LTE	
Philippines	Globe	4G/ LTE	

*For some iPhones, if the option "5G-ON / 4G" is not selected, they will automatically use 3G network speeds in countries/regions that do not support 5G. It is recommended to choose "5G-ON / 4G" .



APN AND NETWORK

OPERATOR LIST

(ICCID PREFIX 8985231 & 8982511)

ICCID PREFIX 8985231

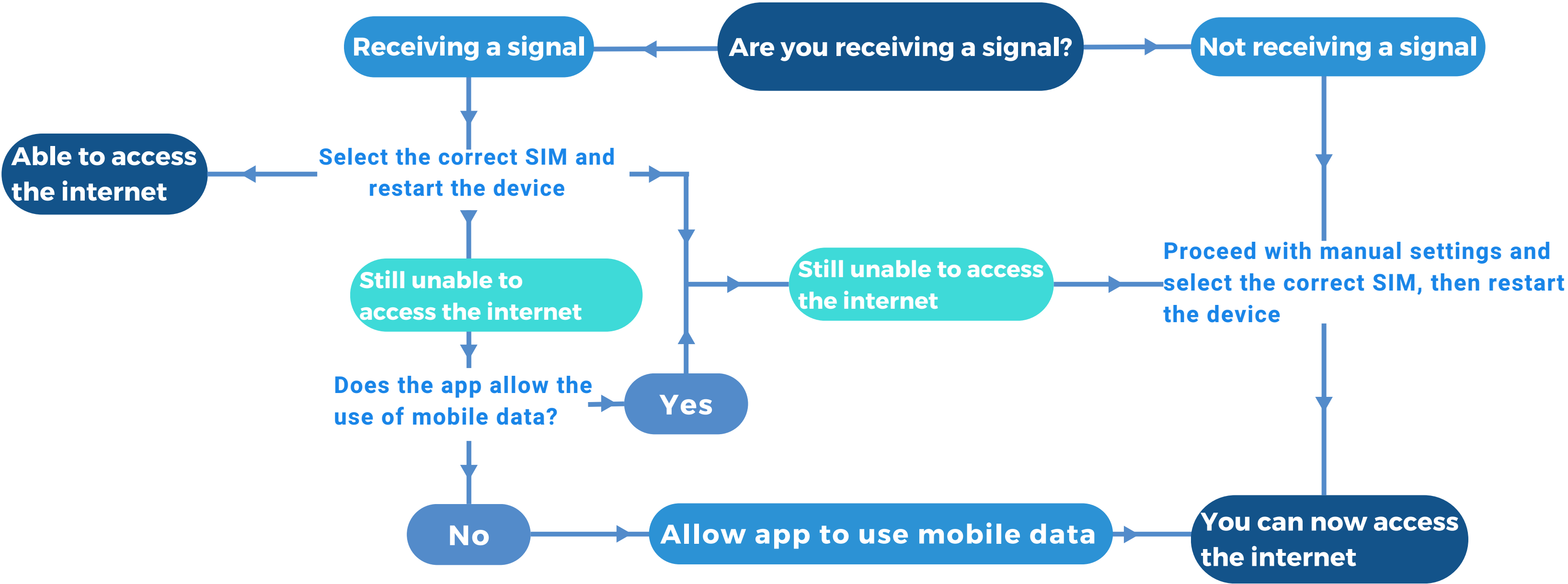
Country / Region	Service Provider	Network	APN
Taiwan	Chunghwa	4G/ LTE	CTExcel

ICCID PREFIX 8985211

Country / Region	Service Provider	Network	APN
China	China Unicom	4G/ LTE	mobile
Macau	CTM	4G/ LTE	
Hong Kong	CSL	4G/ LTE	
Singapore	SingTel/ Star Hub	4G/ LTE	
Malaysia	DIGI/ Maxis	4G/ LTE	
Thailand	AIS/ DTAC	4G/ LTE	

*For some iPhones, if the option "5G-ON / 4G" is not selected, they will automatically use 3G network speeds in countries/regions that do not support 5G. It is recommended to choose "5G-ON / 4G" .

STILL UNABLE TO ACCESS THE INTERNET? CHECK YOUR DATA ROAMING SETTING?



CONTACT US



I still can't use it!!

You can contact us using the following methods.



WhatsApp



Facebook



IMC香港流動數據及話音sim卡



+852 6922 7399

