



IMC eSIM



# iOS System Configuration

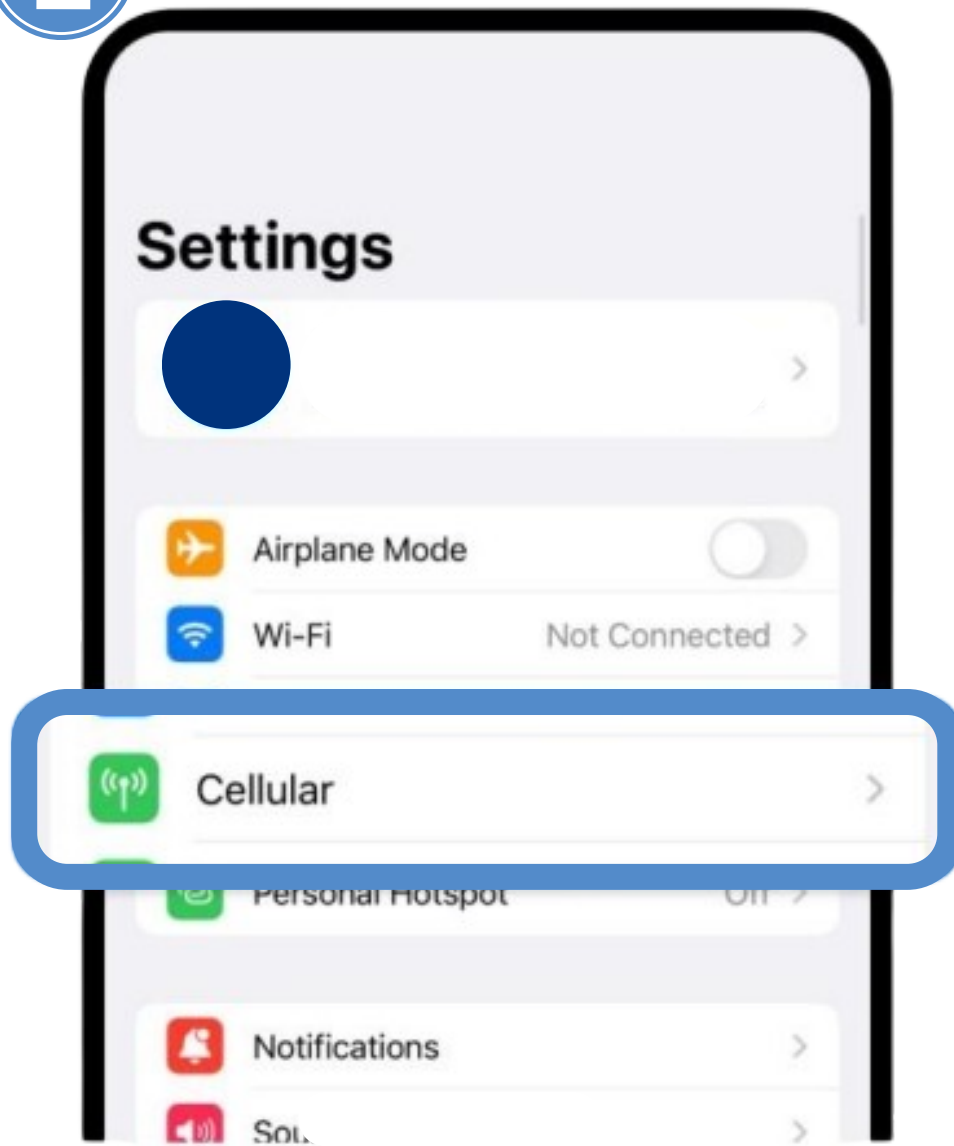


# IMC eSIM

**iOS System Configuration  
(Scan to enable)**

# iOS System Configuration (Scan to enable)

1



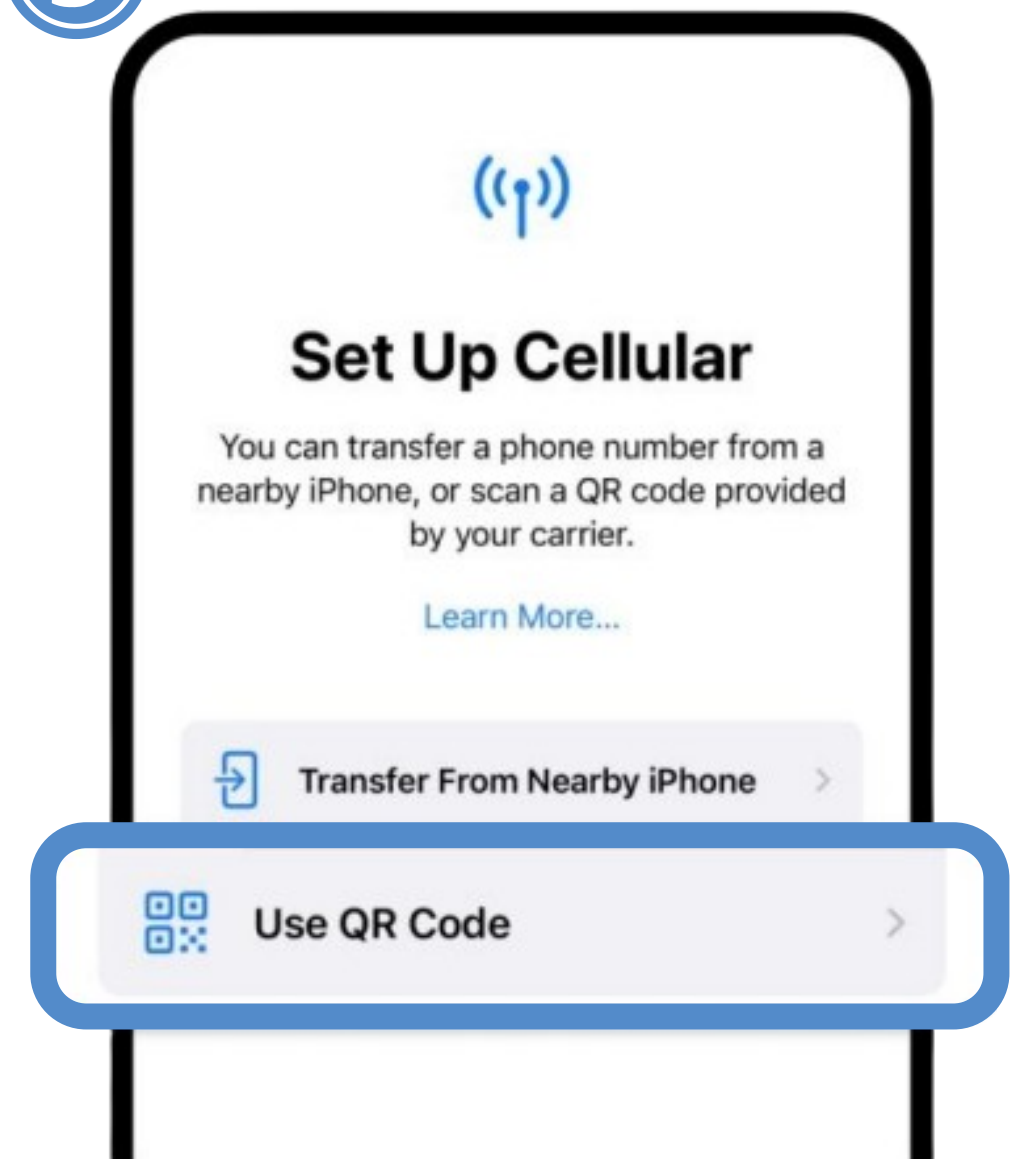
Enter settings and Tap on 'Cellular'

2



Tap on the 'Add eSIM' option.

3

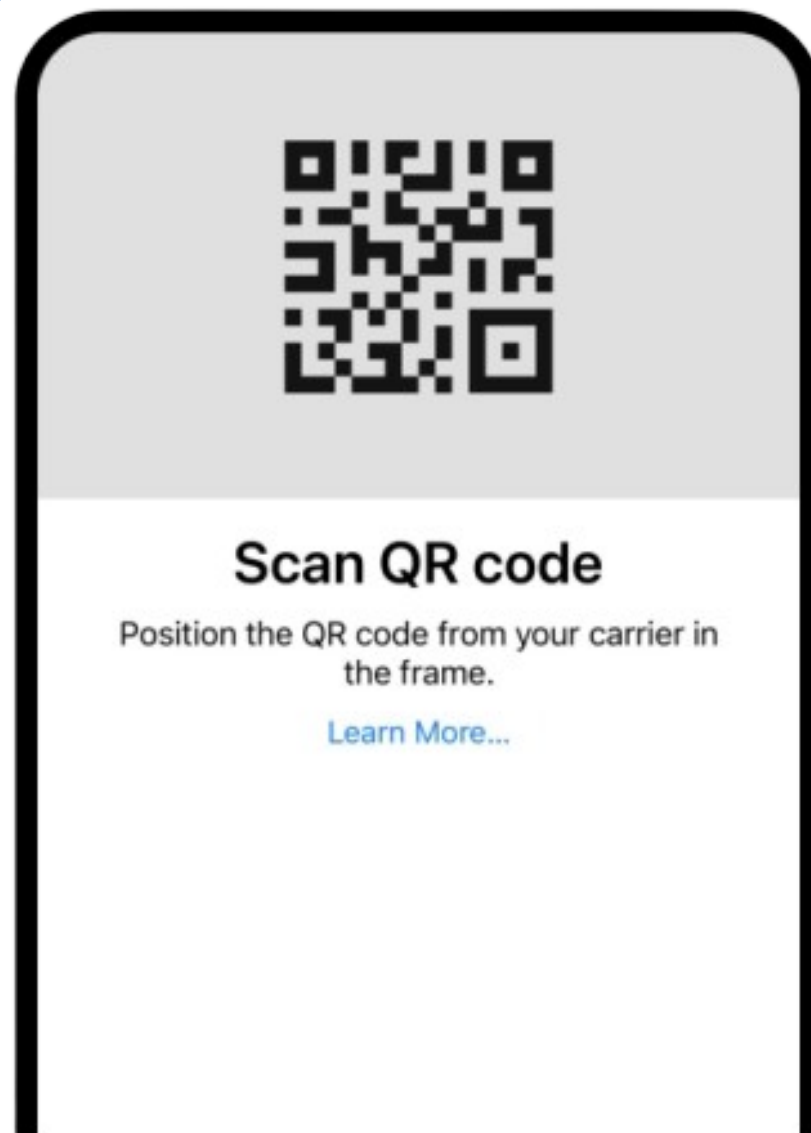


Tap on ' Use QR CODE'

# iOS System Configuration (Scan to enable)



4



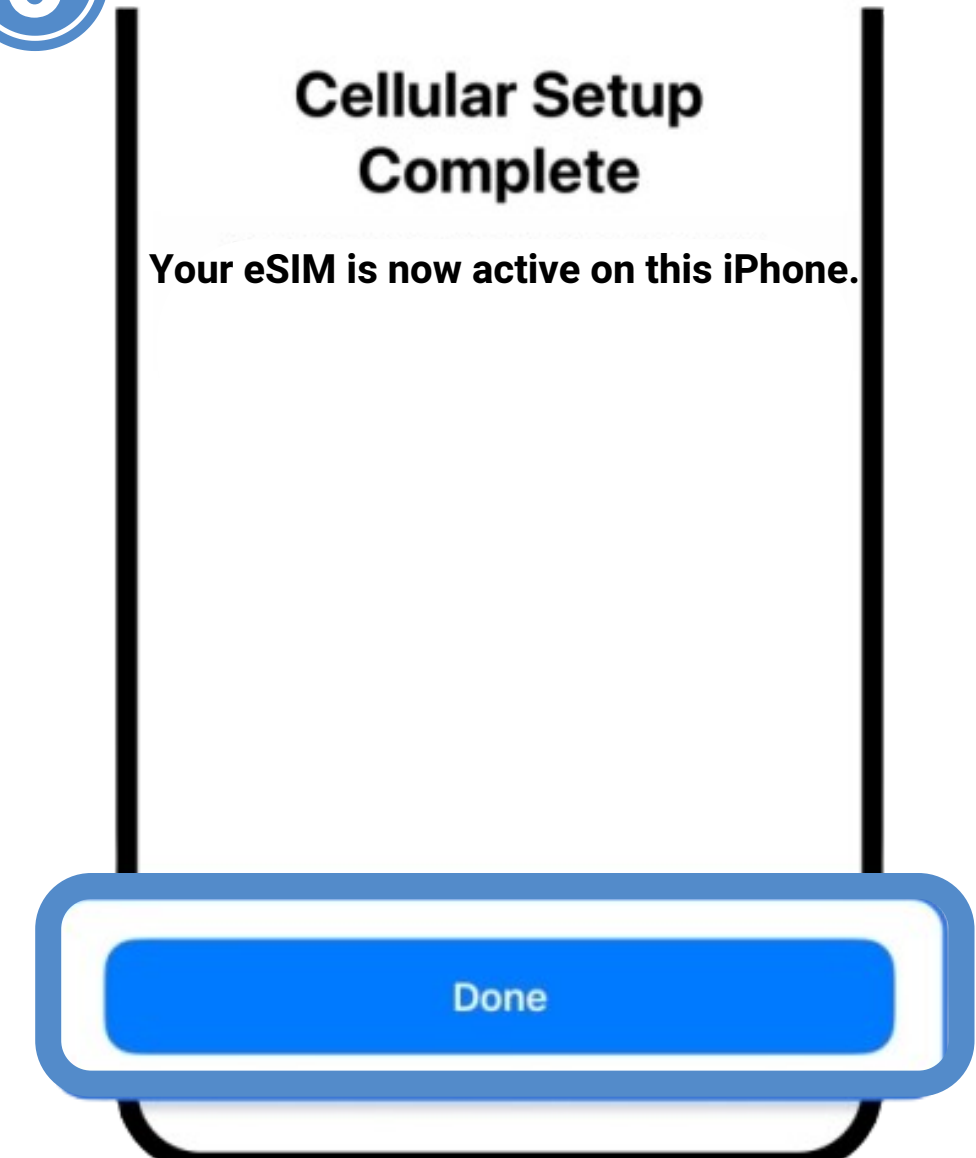
Scan QR Code

5



Tap 'Continue'

6

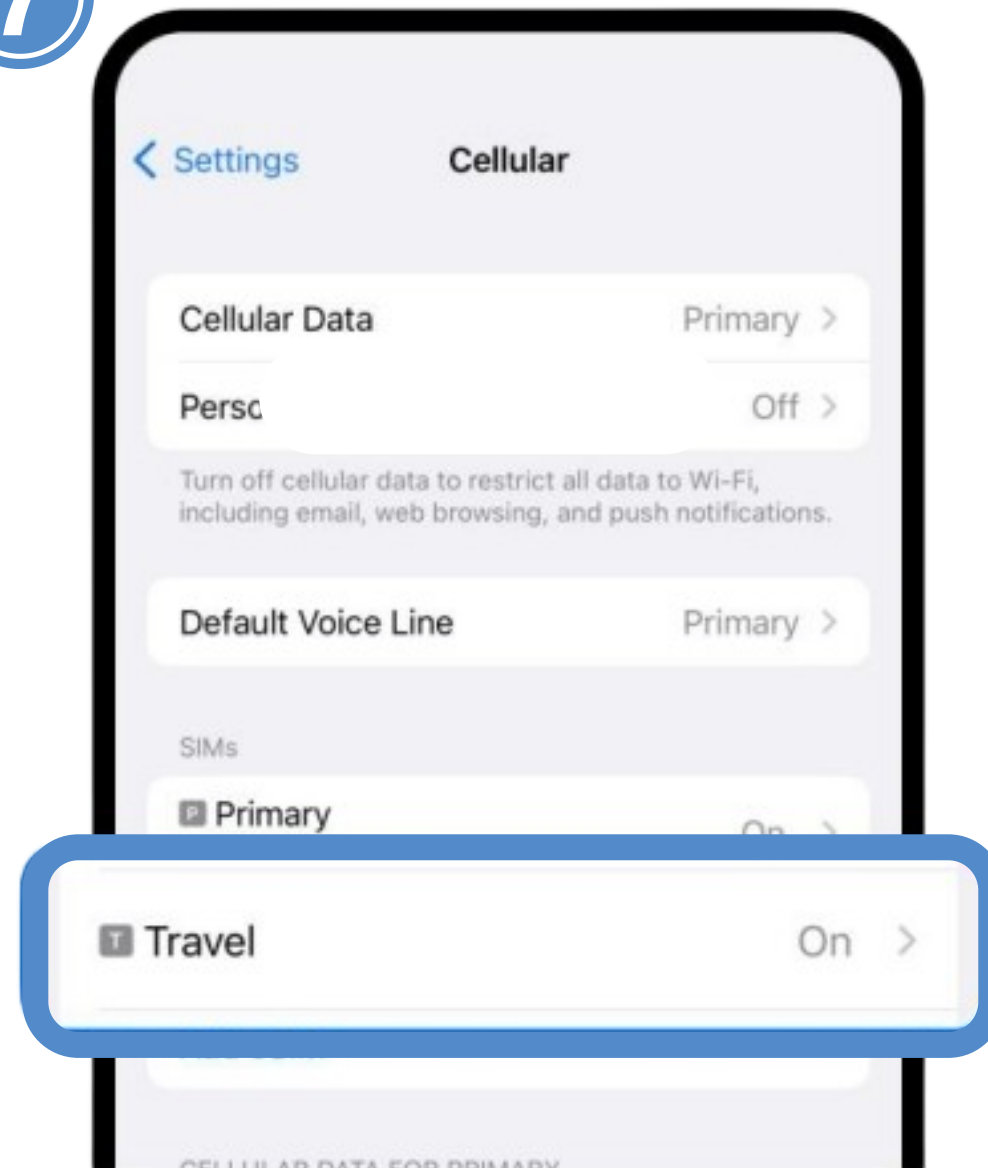


Tap 'Done'

# IMC eSIM iOS System Configuration (Scan to enable)

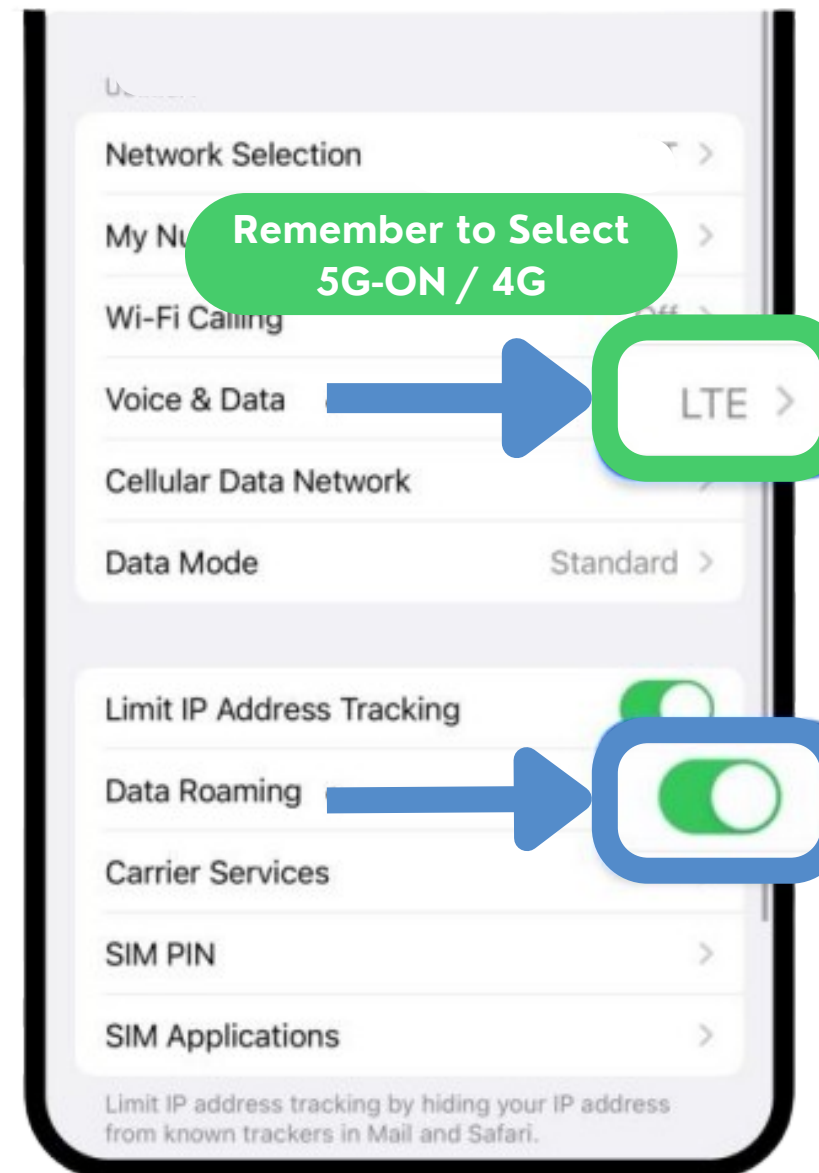


7



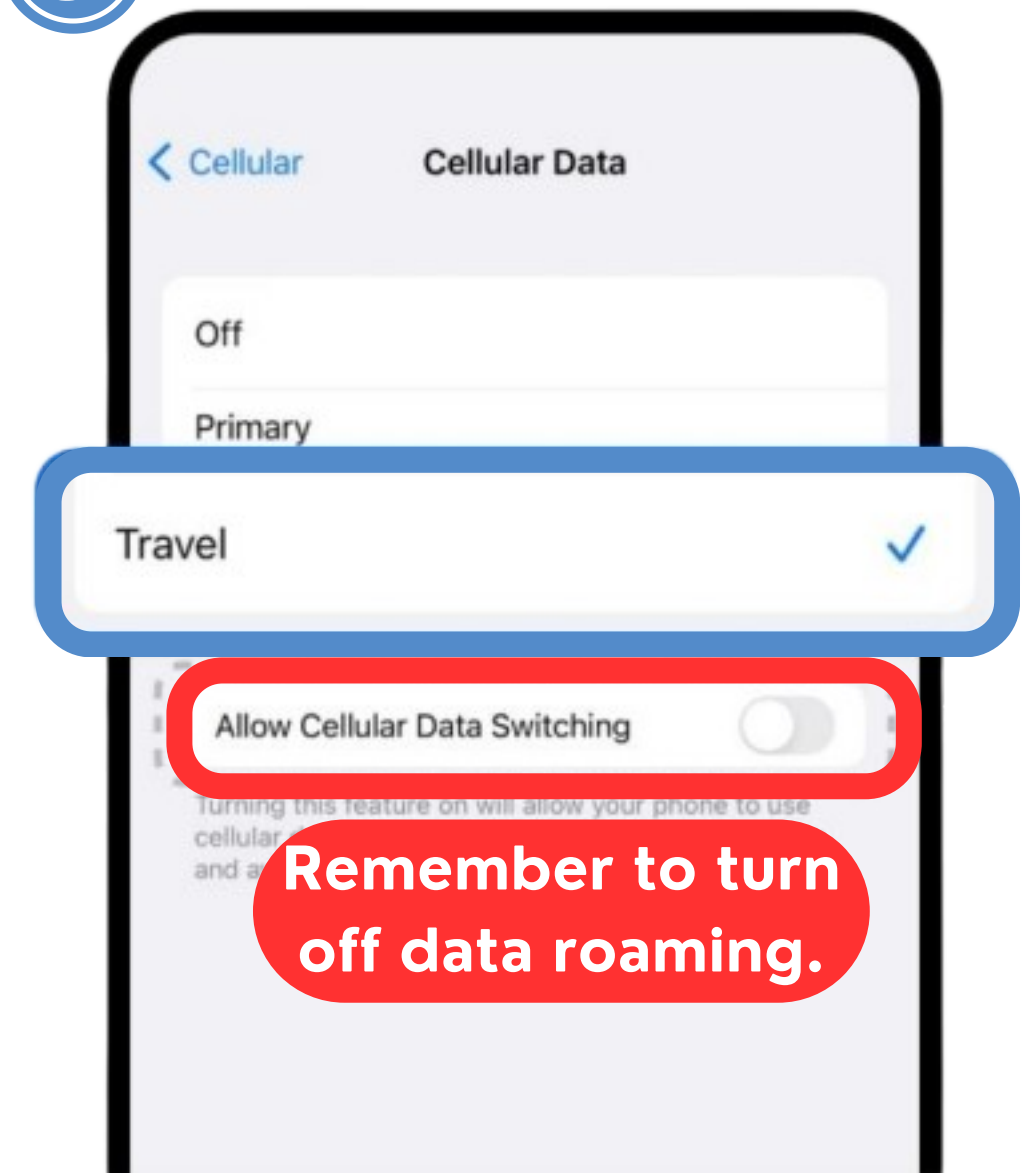
Tap on the added eSIM

8



Set to LTE / 5G and turn on data roaming.

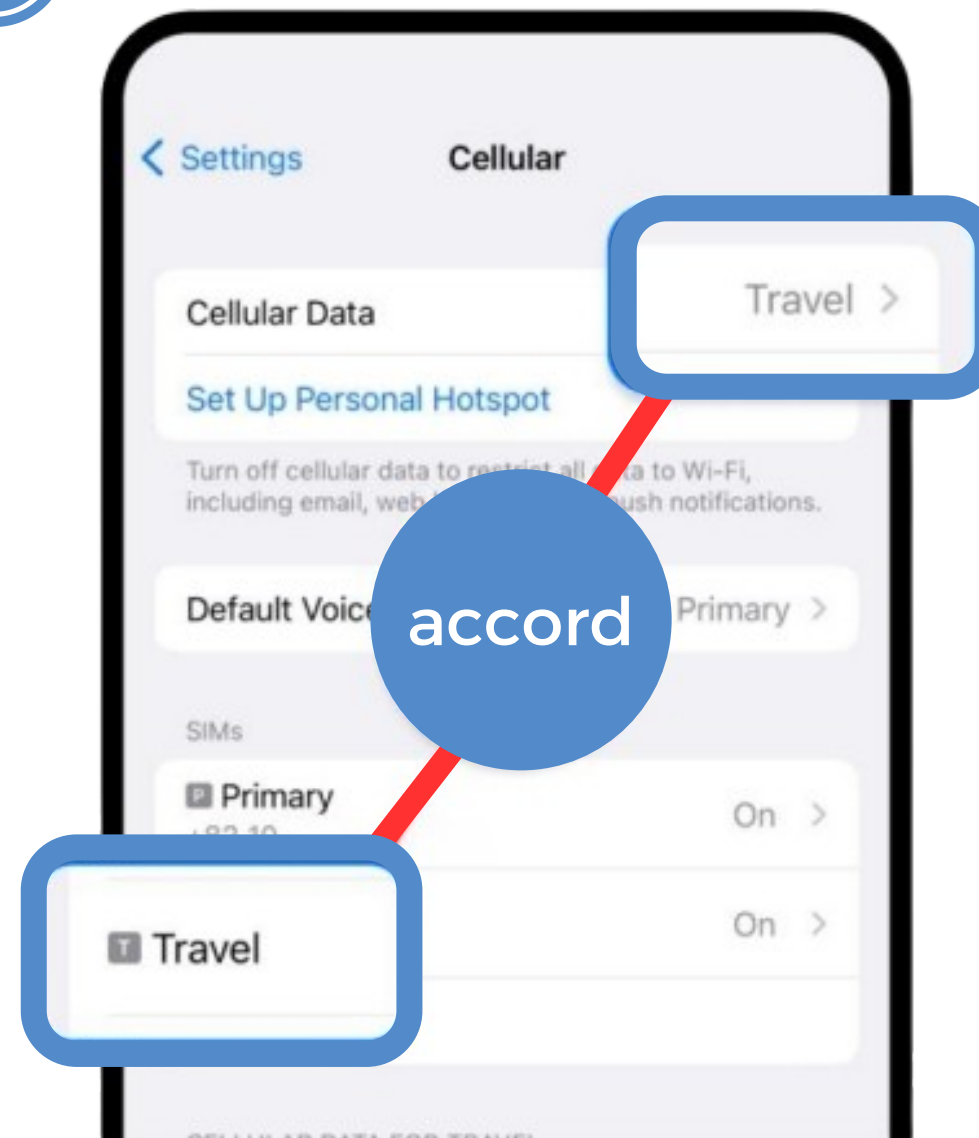
9



Set to LTE and turn on data roaming.

# iOS System Configuration (Scan to enable)

10



Ensure that eSIM is selected.

11

Agree to the terms and conditions, confirm the APN matches with those on the "APN & NETWORK OPERATOR LIST".

Once eSIM setup is completed, and now you can enjoy data services

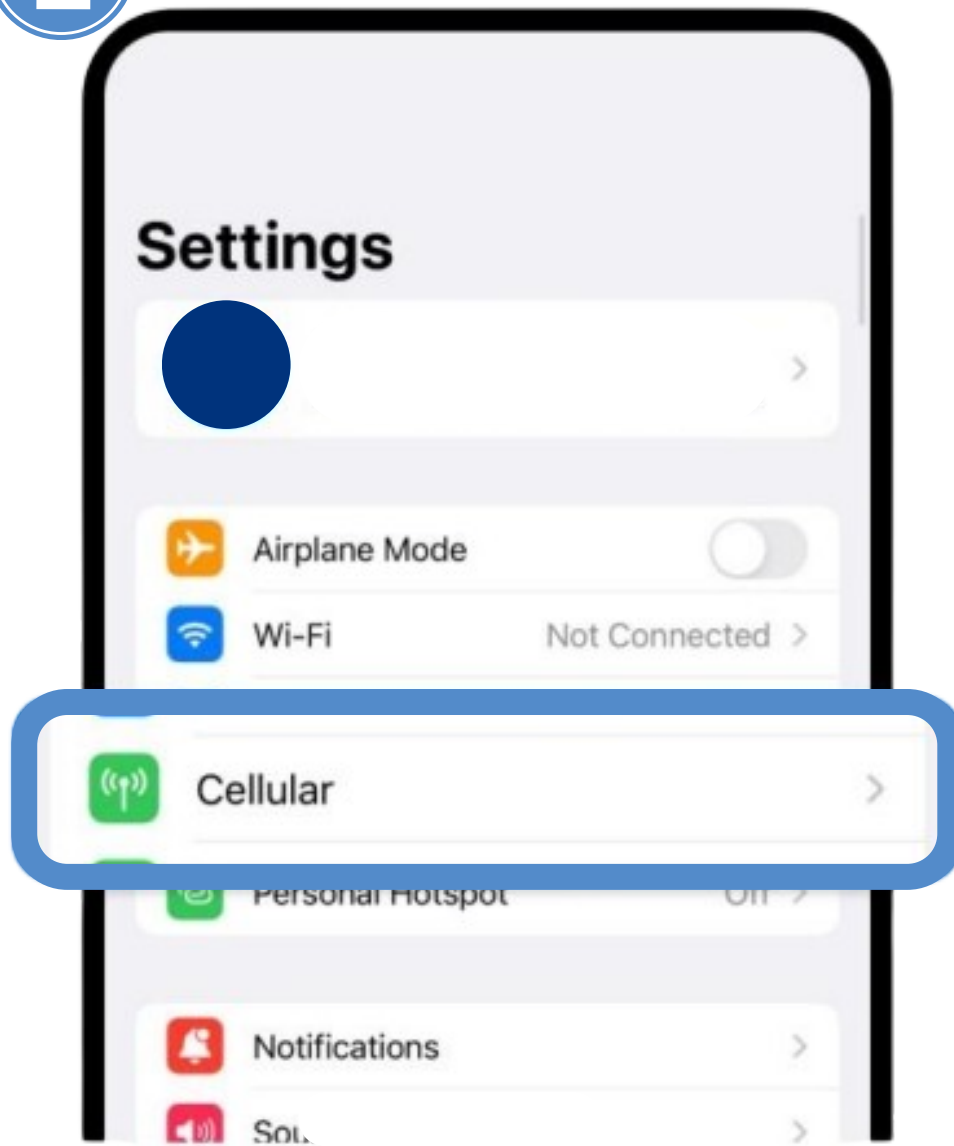
# IMC eSIM

**iOS System Configuration  
(Manually activate)**



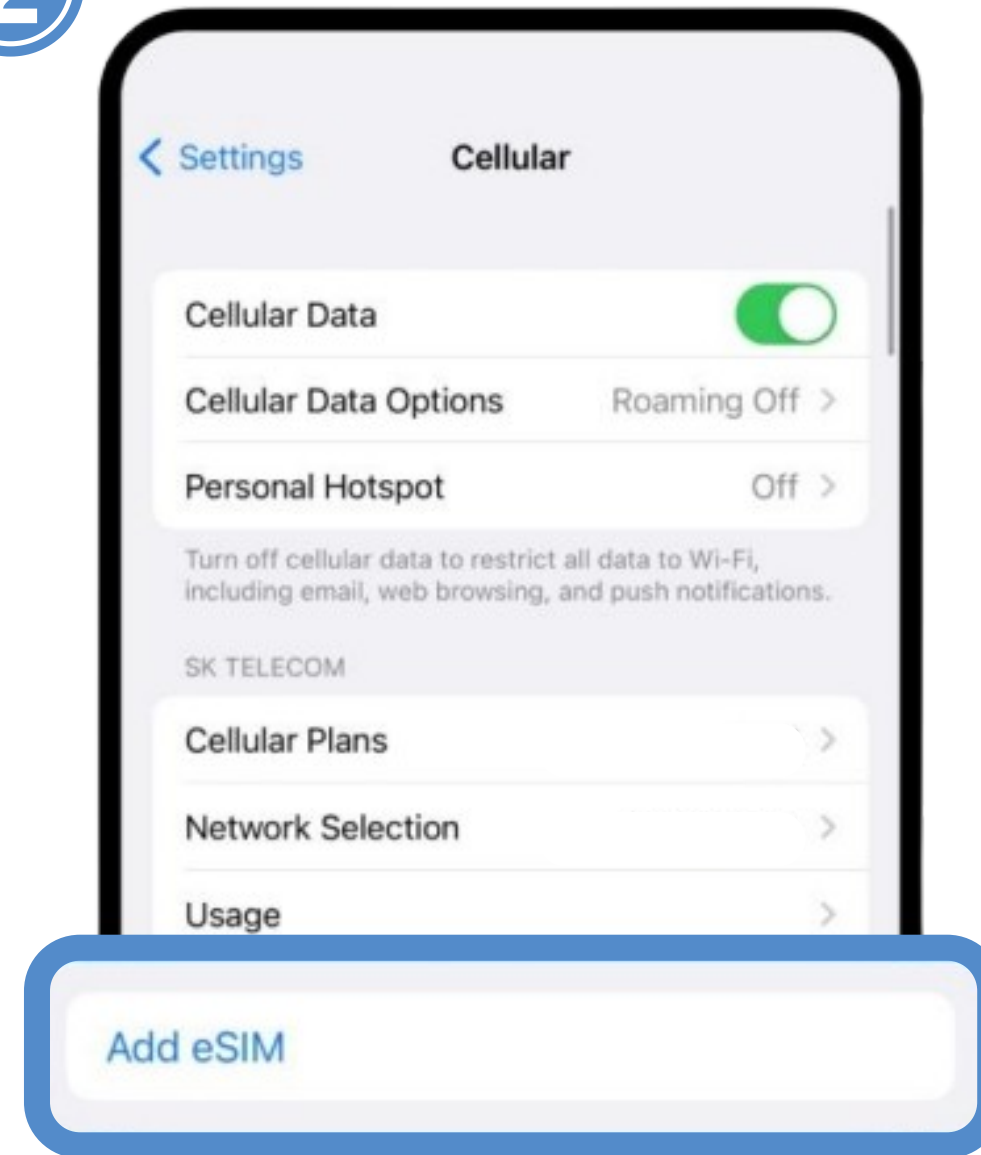
# iOS System Configuration (Manually activate)

1



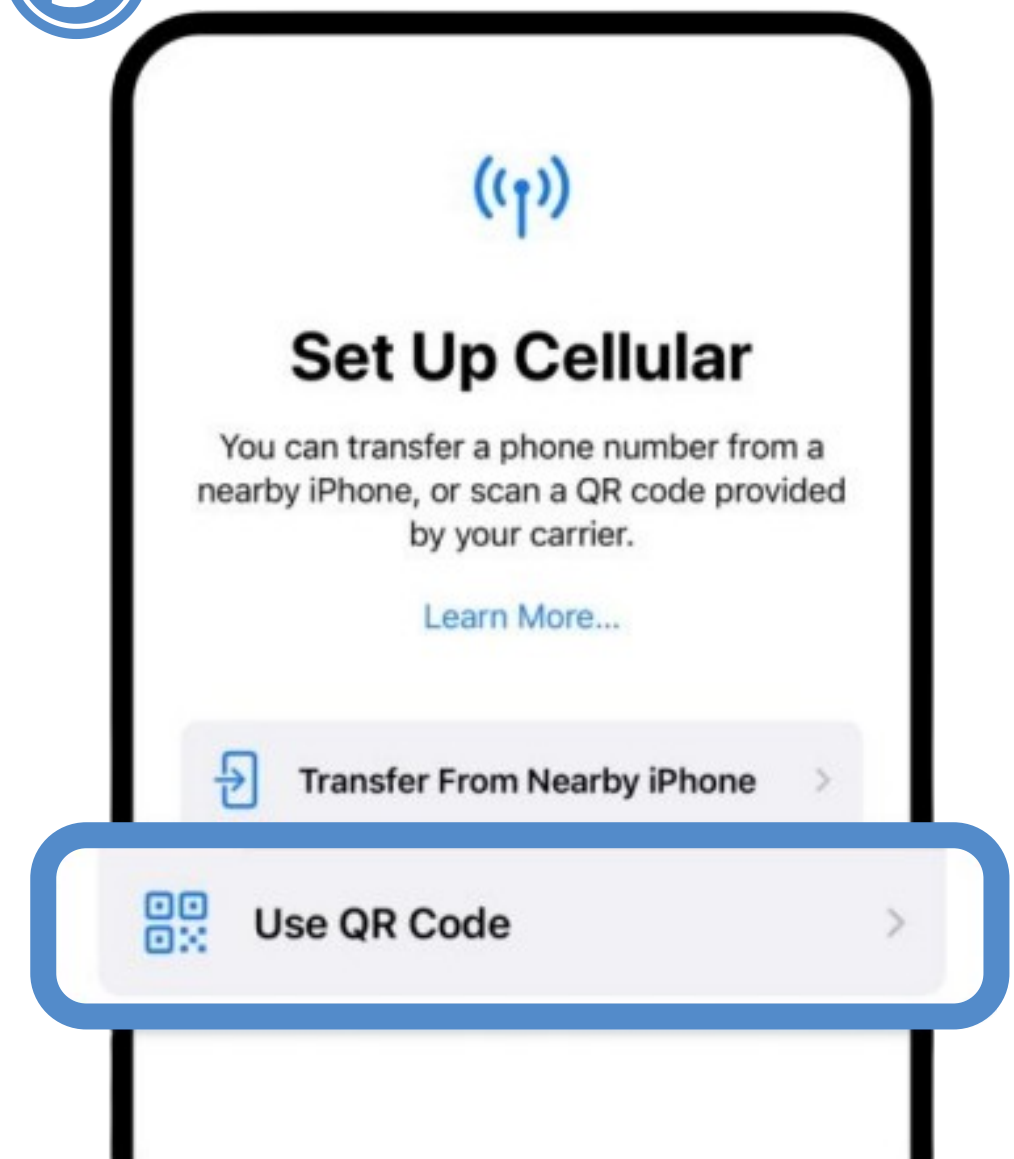
Enter settings and Tap on 'Cellular'

2



Tap on the 'Add eSIM' option.

3

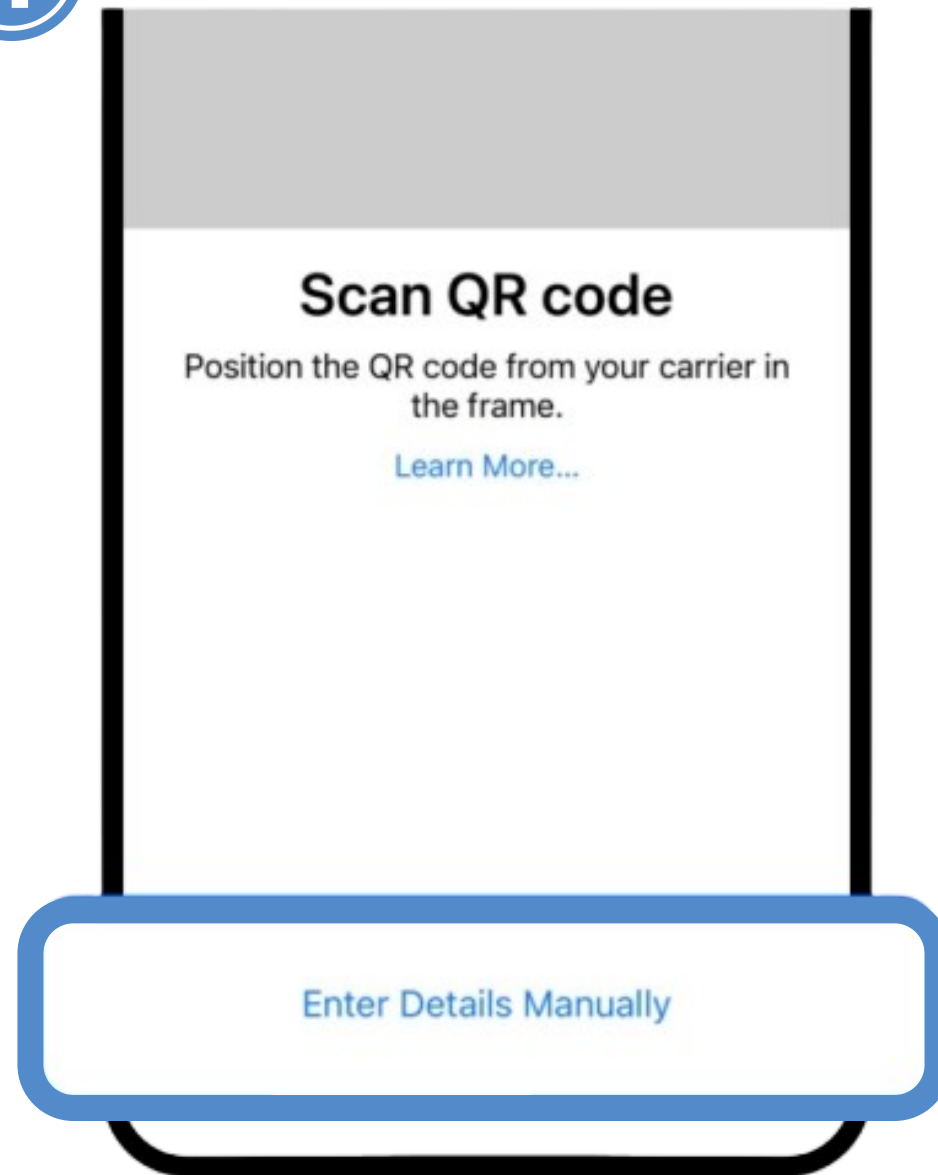


Tap on ' Use QR CODE'



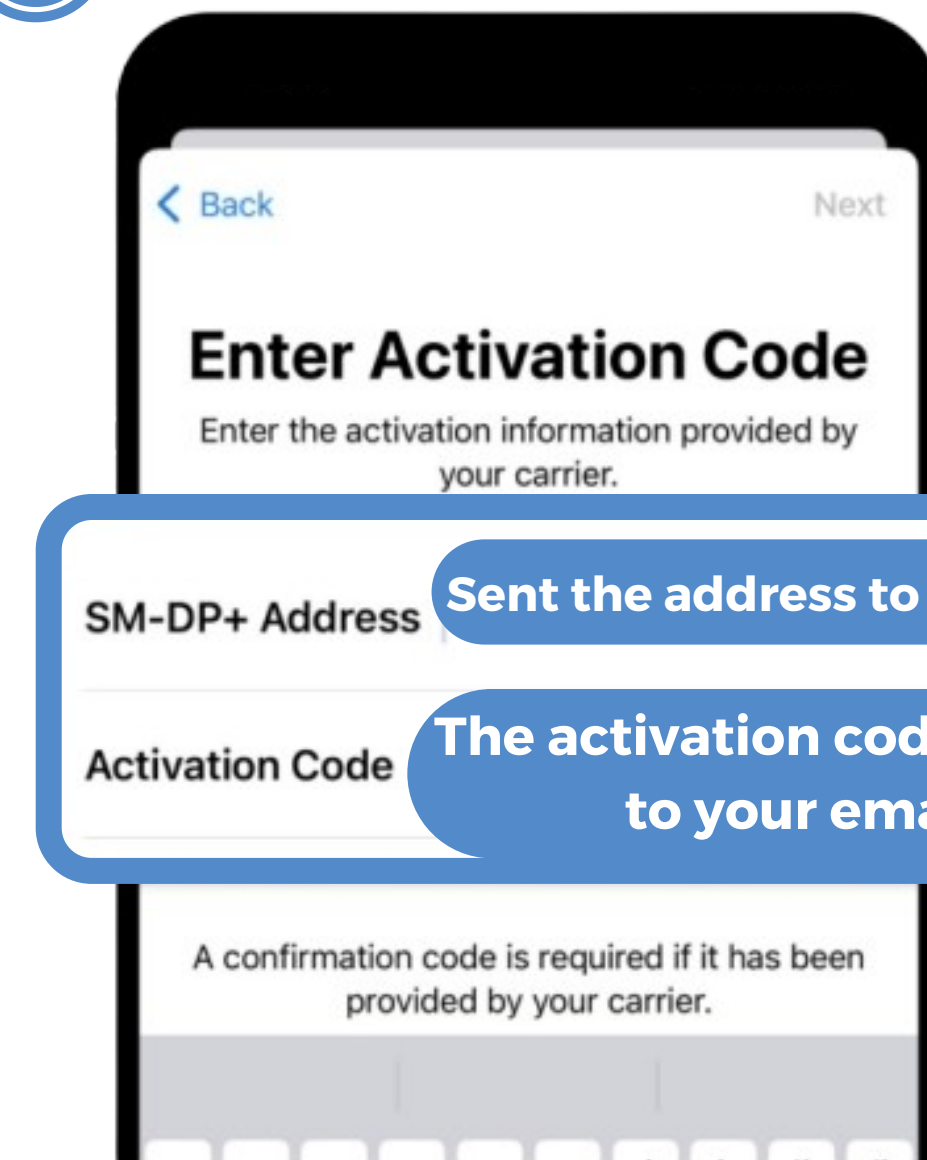
# iOS System Configuration (Manually activate)

4



Tap on 'Enter Details Manually'

5



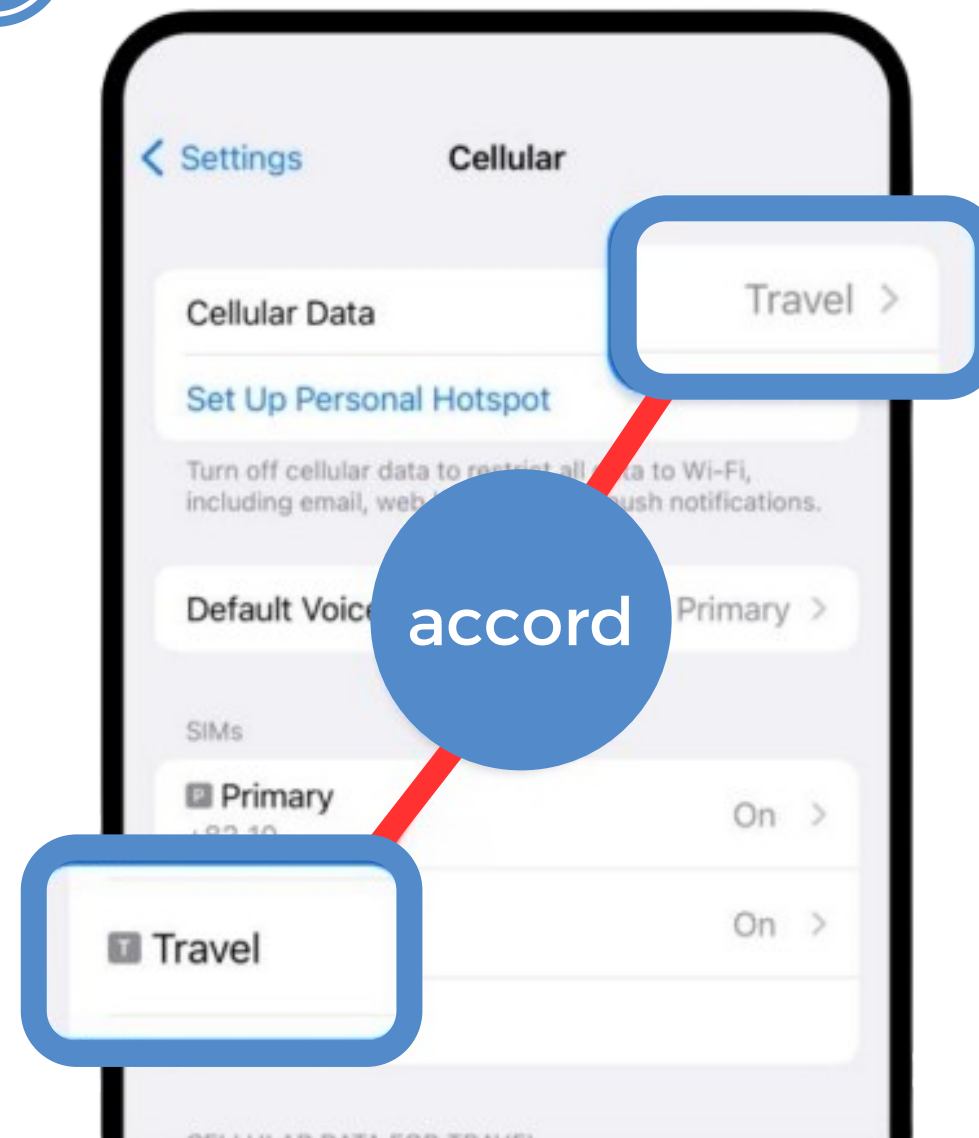
Sent the address to your email inbox

The activation code has been sent to your email inbox.

Enter detailed information.

# iOS System Configuration (Manually activate)

10



Ensure that eSIM is selected.

11

Agree to the terms and conditions, confirm the APN matches with those on the "APN & NETWORK OPERATOR LIST".

Once eSIM setup is completed, and now you can enjoy data services



# APN AND NETWORK OPERATOR LIST (ICCID PREFIX 8985212)

Country / Region	Service Provider	Network	APN
Canada	Bell / Telus	5G / 4G	cmlink / cmhk
China	CMCC		
Hong Kong	CMHK		
Indonesia	Excelcom / Telkomsel	4G	
Japan	KDDI	5G / 4G	
Korea	ST Telecom		
Macau	CTM		
Malaysia	Celcom / Digi		
Philippines	Globe		
Singapore	SingTel		
Taiwan	Chunghwa		
USA	AT&T		
Thailand	Truemove		
Vietnam	Vinaphone	4G	

\*For some iPhones, if the option "5G-ON / 4G" is not selected, they will automatically use 3G network speeds in countries/regions that do not support 5G. It is recommended to choose "5G-ON / 4G" .



# APN AND NETWORK OPERATOR LIST (ICCID PREFIX 8985212)

Country / Region	Service Provider	Network	APN
Austria	A1 / Orange	5G / 4G	cmlink / cmhk
Belgium	Orange / Belgacom / Base	4G	
Bulgaria	MOBILTEL / Telenor / Vivacom	5G / 4G	
Croatia	Telemach / A1		
Cyprus	MTN Cyprus / CYTA		
Czech Republic	Vodafone / O2		
Denmark	TDC / Telenor / Telia / Hi3G	4G	
Estonia	Tele2 / Telia	5G / 4G	
Finland	Ålands Telekommunikation / Elisa		
France	SFR / BOUYGUES / Orange		
Germany	Vodafone / Telefonica O2		
Gibraltar	Gibtel	4G	
Greece	Vodafone / Wind Hellas	5G / 4G	
Hungary	Telenor / Vodafone		

\*For some iPhones, if the option "5G-ON / 4G" is not selected, they will automatically use 3G network speeds in countries/regions that do not support 5G. It is recommended to choose "5G-ON / 4G" .



# APN AND NETWORK OPERATOR LIST (ICCID PREFIX 8985212)

Country / Region	Service Provider	Network	APN
Iceland	Siminn / Vodafone	5G / 4G	cmlink / cmhk
Ireland	Meteor		
	3 Ireland	4G	
Italy	WIND		
	Iliad / Vodafone	5G / 4G	
Latvia	Tele2 / BITE	4G	
Lithuania	UAB Tele2	5G / 4G	
	UAB Bite	4G	
Luxembourg	TANGO / P&T	5G / 4G	
Malta	Epic	4G	
	GO	5G / 4G	
Netherlands	Vodafone / KPN		
Norway	Telia / Telenor	4G	
Poland	Polkomtel / Orange / P4	5G / 4G	
Portugal	NOS / MEO		
Romania	Vodafone		

\*For some iPhones, if the option "5G-ON / 4G" is not selected, they will automatically use 3G network speeds in countries/regions that do not support 5G. It is recommended to choose "5G-ON / 4G" .



# APN AND NETWORK OPERATOR LIST (ICCID PREFIX 8985212)

Country / Region	Service Provider	Network	APN
Slovakia	Telefonica O2 / Orange Slovensko	5G / 4G	cmlink / cmhk
Slovenia	Telekom (Mobitel) / A1 (Si Mobile) / Telemach		
Spain	Telefonica / Vodafone		
	Xfera	4G	
Sweden	Hi3G	5G /4G	
Switzerland	Sunrise / SALT (Orange)		
United Kingdom	Vodafone / Hutchison / EE / Telefonica	4G	

**\*For some iPhones, if the option "5G-ON / 4G" is not selected, they will automatically use 3G network speeds in countries/regions that do not support 5G. It is recommended to choose "5G-ON / 4G" .**



# APN AND NETWORK OPERATOR LIST (ICCID PREFIX 8985207)

Country / Region	Service Provider	Network	APN
Korea	SK Telecom	5G / 4G / LTE	3gnet
Japan	Softbank / KDDI		
China	China Unicom		
Singapore	Star Hub		
Cambodia	Metfone		
Indonesia	Indosat / 3 Indonesia		
Philippines	Globe		
Hong Kong	3HK		
Macau	CTM	4G/ LTE	
Malaysia	DIGI		
Thailand	DTAC		
Australia	Optus		
New Zealand	2degree		
Vietnam	Viettel		

\*For some iPhones, if the option "5G-ON / 4G" is not selected, they will automatically use 3G network speeds in countries/regions that do not support 5G. It is recommended to choose "5G-ON / 4G" .





# APN AND NETWORK OPERATOR LIST (ICCID PREFIX 8985211)

Country / Region	Service Provider	Network	APN
Korea	SK Telecom	4G/ LTE	mobile
Japan	Softbank / KDDI		
Taiwan	Chunghwa Telecom / Taiwan Mobile		
China	China Unicom		
Macau	CTM		
Hong Kong	CSL		
Singapore	SingTel		
Malaysia	DIGI/ Maxis		
Thailand	AIS/ DTAC		
Australia	Optus		
New Zealand	Telecom NZ		
Cambodia	Hello Axiata		
Indonesia	Telkomsel		
Philippines	Globe		
Vietnam	Vietnamobile		

\*For some iPhones, if the option "5G-ON / 4G" is not selected, they will automatically use 3G network speeds in countries/regions that do not support 5G. It is recommended to choose "5G-ON / 4G" .



# APN AND NETWORK OPERATOR LIST

## ICCID PREFIX 8985231

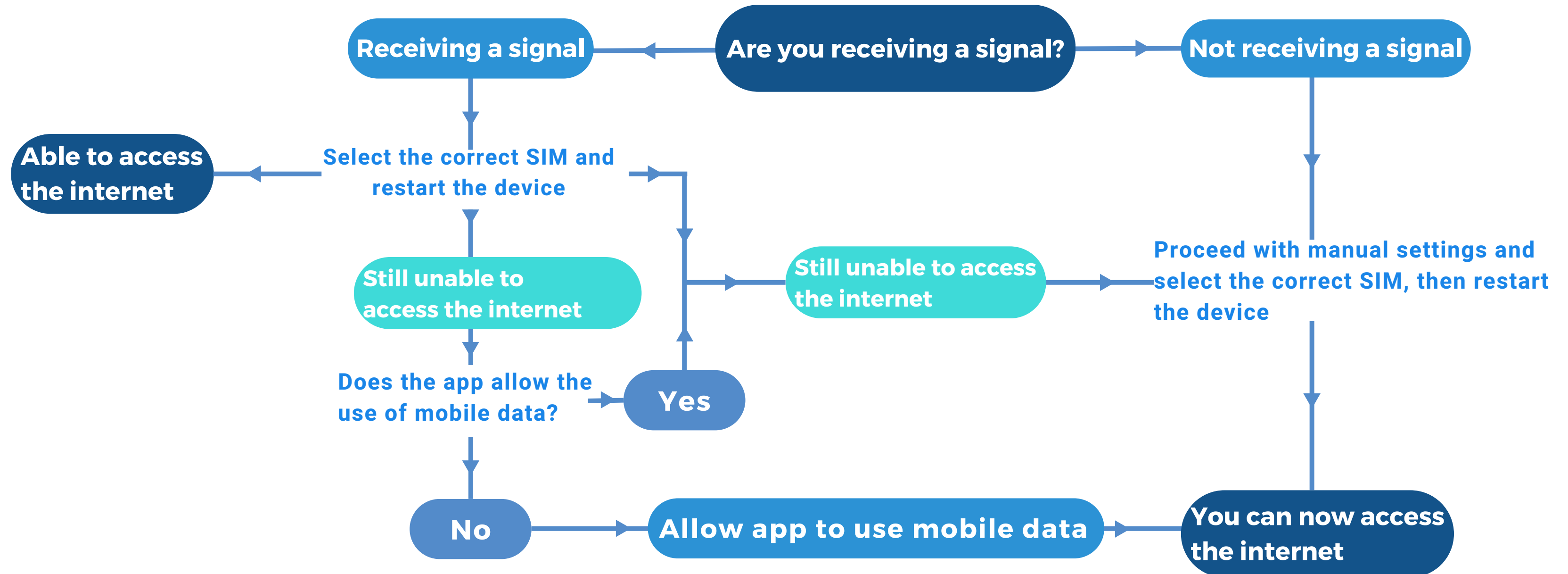
Country / Region	Service Provider	Network	APN
Taiwan	Chunghwa Telecom	4G/ LTE	CTExcel
China	China Telecom		
Macau	China Telecom		
Hong Kong	CSL		

## ICCID PREFIX 8985219

Country / Region	Service Provider	Network	APN
Hong Kong	CSL	5G / 4G/ LTE	mobile

\*For some iPhones, if the option "5G-ON / 4G" is not selected, they will automatically use 3G network speeds in countries/regions that do not support 5G. It is recommended to choose "5G-ON / 4G" .

## STILL UNABLE TO ACCESS THE INTERNET? CHECK YOUR DATA ROAMING SETTING?



# CONTACT US



I still can't use it!!

You can contact us using  
the following methods.



WhatsApp



Facebook



**IMC Networks**



**+852 6922 7399**

